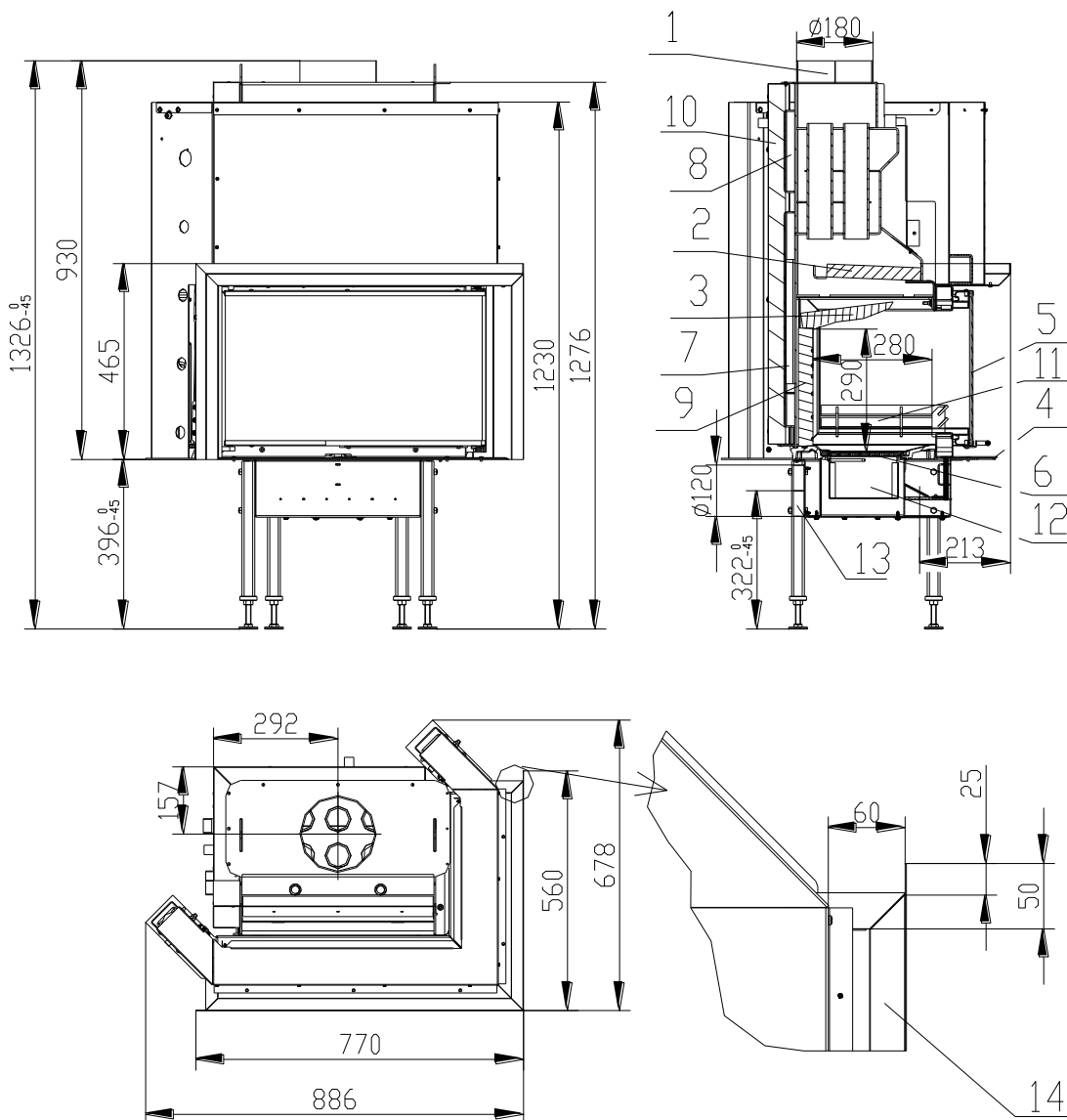


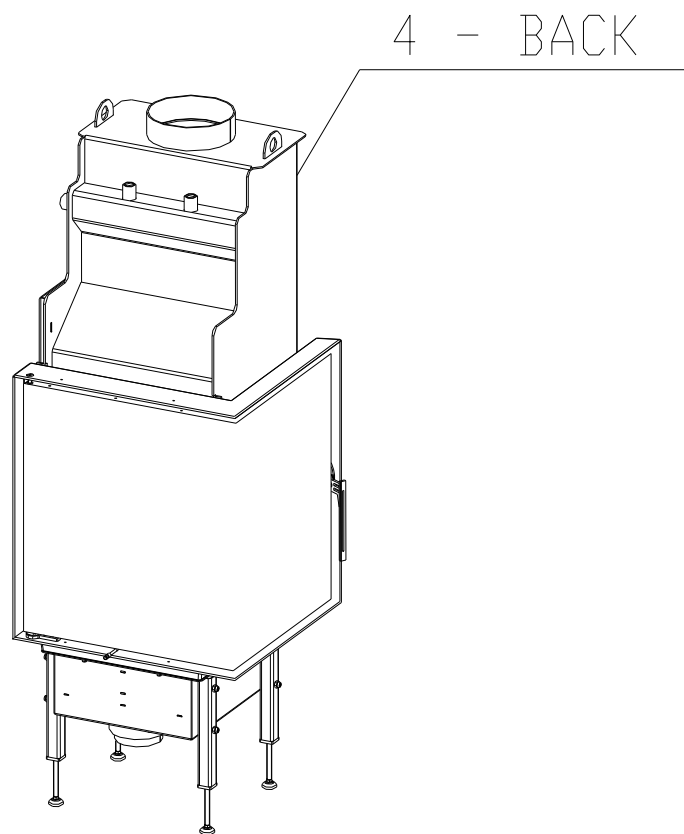
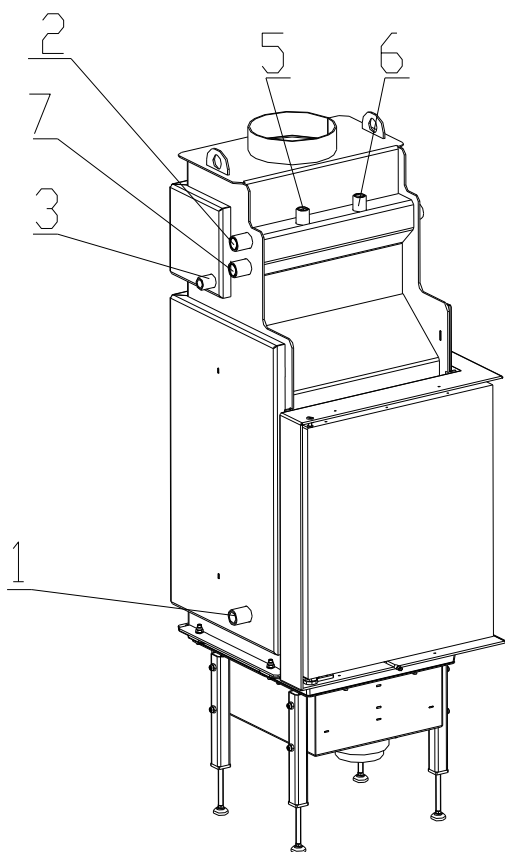
HOT WATER FIREPLACE INSERTS WH 650 VCP AQUATIC IN ACCORDANCE WITH EN 13 229



- | | |
|--|---|
| <ul style="list-style-type: none"> 1. Smoke flue bellmouth 2. Vermiculite deflector 3. Deflector Carcon 4. Control of air suction regulation for combustion 5. Glass 6. Grate 7. Exchanger | <ul style="list-style-type: none"> 8. Coolant loop 9. Refractory concrete Carcon 10. Insulation 11. Barrier 12. Ash tray 13. External air input 14. Frame |
|--|---|

Technical data:

		Closed firebox
Nominal heat output	kW	10
Efficiency	%	85,5
Efficiency for water	%	6,3
Volume flow of combustion products	g/s	7,1
Flue-gas temperature	°C	210
Min. feed pressure at nom. heat output	Pa	12
Fuel		wood (beech logs)
Fuel consumption per hour	kg/h	2,81
CO emission in burnt gas (in relation to 13% O ₂) %		0,07
Smoke flue diameter	mm	180
Weight	kg	240



- 1 – Cold water input into water exchanger (reverse), external thread 1“
- 2 – Warm water output from water exchanger (rising pipe), external thread 1“
- 3 – Cold water input for coolant loop , external thread 1/2“
- 4 – Warm water output from coolant loop, external thread 1/2“
- 5 – Input for bleed valve, internal thread 1/2”
- 6 – Pressure valve, internal thread 1/2”
- 7 – Thermic security sensor, external thread 1”

BeF Home, s.r.o.
Kotvrdovice 277
679 07 Kotvrdovice
IČO: 25524682



Type: **WH 650**

Version: **650, 650V, 650VCL, 650VCP, 650CP, 650CL**

Test number: **30-11000/30-10891**

Notified person: **1015 EN 13229**

Heat output: **10 kW capacity for heating**

Efficiency: **85,5 %**

CO emission in burnt gas (in relation to 13% O₂): **0,07 %**

Burnt gas temperature: **210 °C**

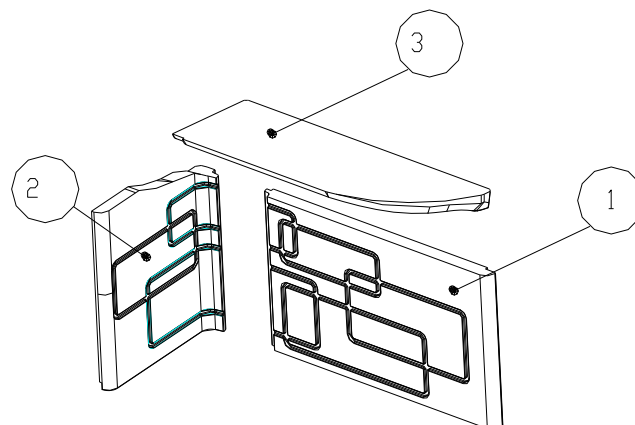
Distance from adjacent combustible materials: **8cm + 10cm thermal insulation**

Fuel: **wood (beech logs)**

Wood-burning fireplace insert for room heating.

Peruse and keep service instructions!

Appliance with short-term combustion process!



- 1 – Back Side
- 2 – Left side
- 3 – Deflektor