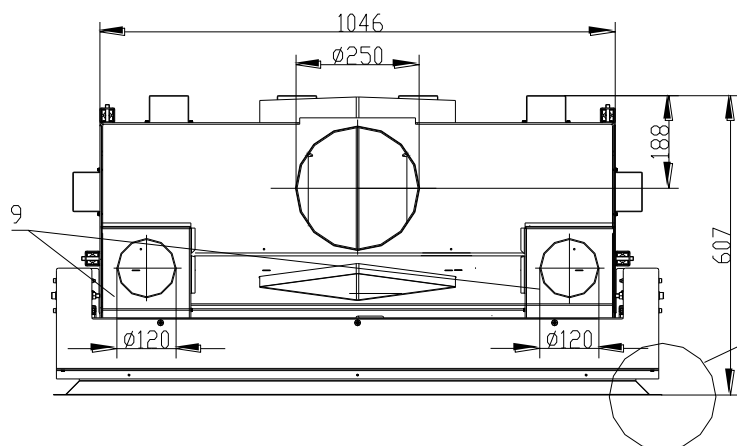
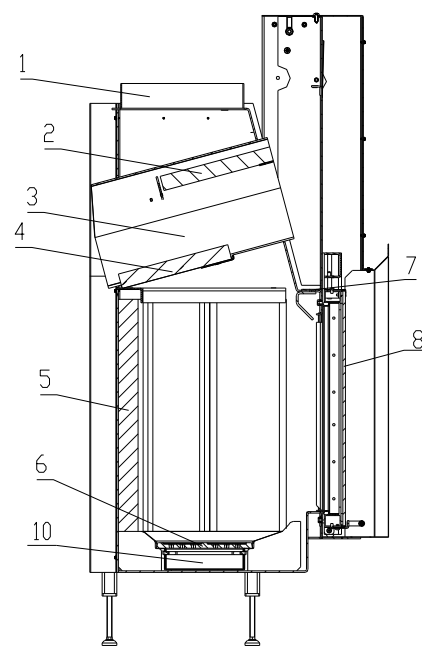
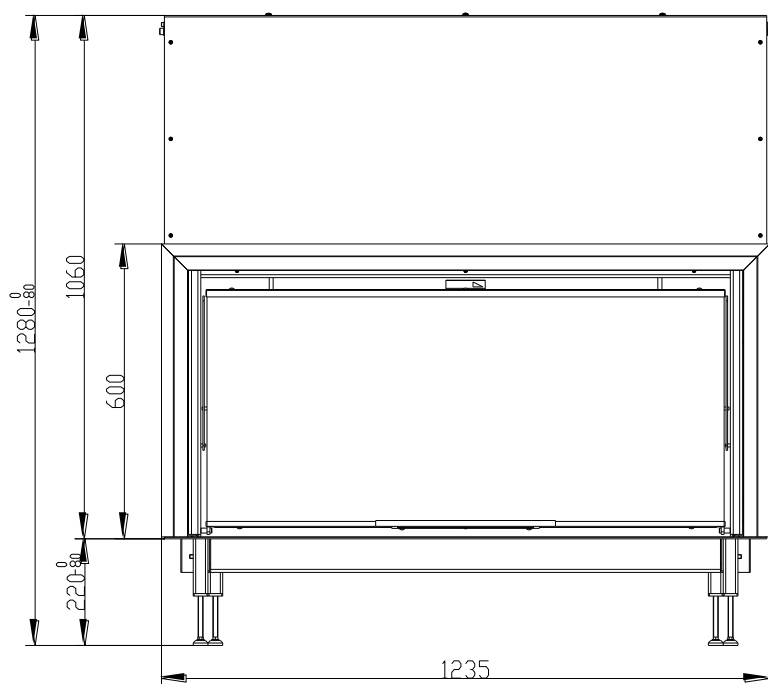


FIREPLACE INSERT BRIDGE in accordance with EN 13 229 – W



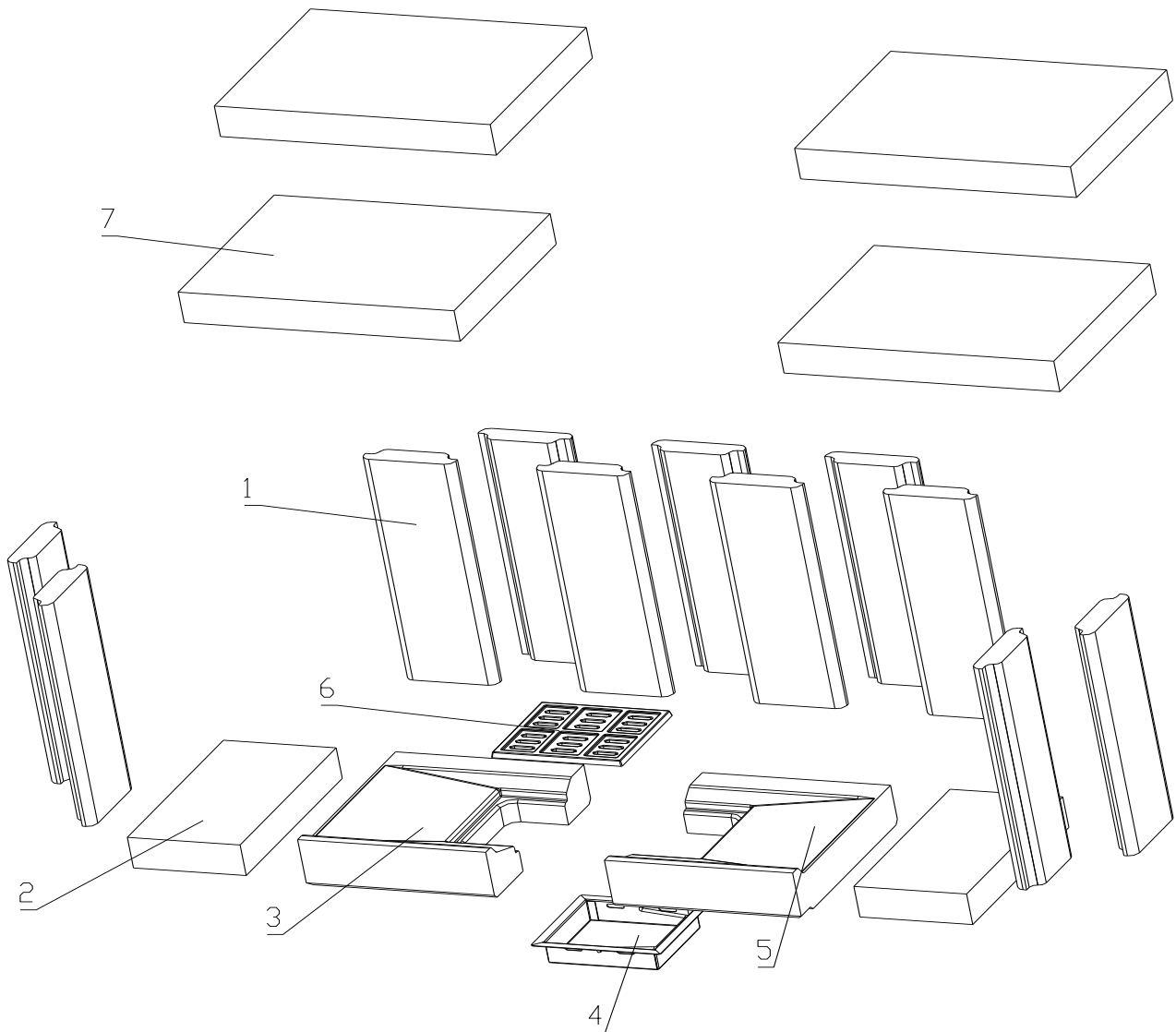
- 1. Flue bellmouth**
- 2. Deflector**
- 3. Deflector**
- 4. Deflector**
- 5. Fire-bricks**
- 11. Frame**

- 6. Grate**
- 7. Regulation of secondary air**
- 8. Glass**
- 9. External air input**
- 10. Ash Tray**

Technical data:

		Closed firebox
Nominal heat output	kW	14,5
Efficiency	%	77
Volume flow of combustion products	g/s	19,6
Flue-gas temperature	°C	276,3
Min. feed pressure at nom. heat output	Pa	12
Fuel		wood (beech logs)
Fuel consumption per hour	kg/h	4,5
CO emission in burnt gas (in relation to 13% O ₂) %		0,19
Smoke flue diameter	mm	250
Weight	kg	309

Assembly of a fire-brick firebox:



1 Side face
2 Hearth
3 Left base

4 Ash pan
5 Right base
6 Grate

7 Deflector

BeF Home, s.r.o. Kotvrdovice 277 679 07 Kotvrdovice IČO: 25524682		
Type: Bridge Version: Bridge Test number: 30-10279 Notified person: 1015 EN 13229 Heat output: 14,5kW capacity for heating Efficiency: 77 % CO emission in burnt gas (in relation to 13% O ₂): 0,19 % Burnt gas temperature: 276,3 °C Distance from adjacent combustible materials: 8cm + 10cm thermal insulation		
Fuel: wood (beech logs) Wood-burning fireplace insert for room heating.		
Peruse and keep service instructions! Appliance with short-term combustion process!		

¹⁾ For details see Installation and Service Instructions