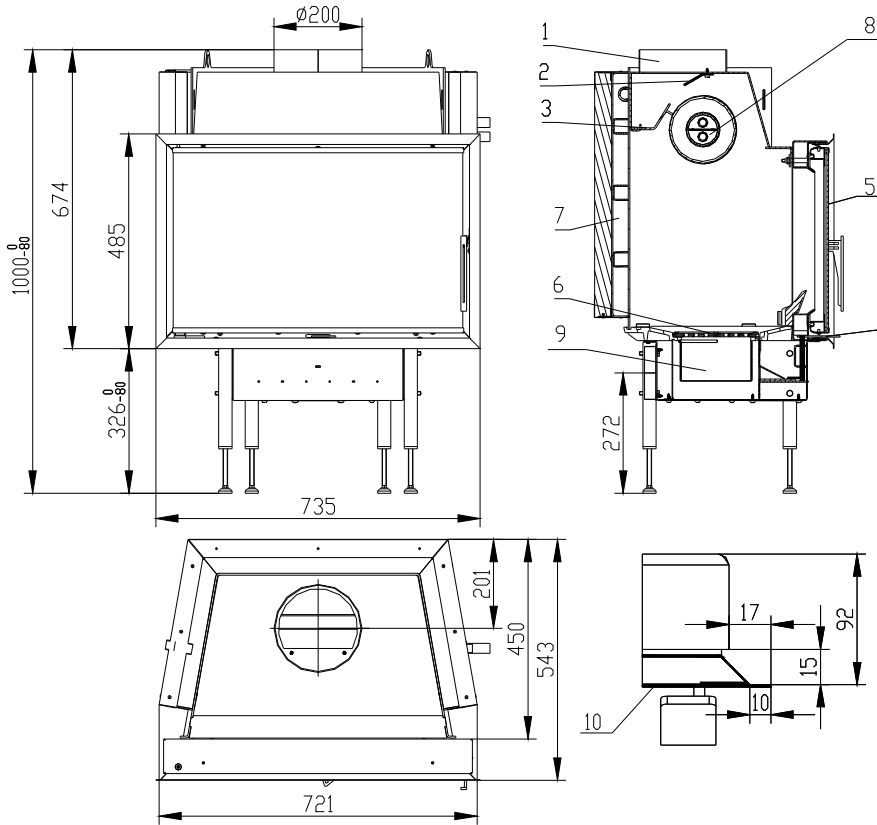


HOT WATER FIREPLACE INSERTS START 7 AQUA IN ACCORDANCE WITH EN 13 229

Scheme:



Description:

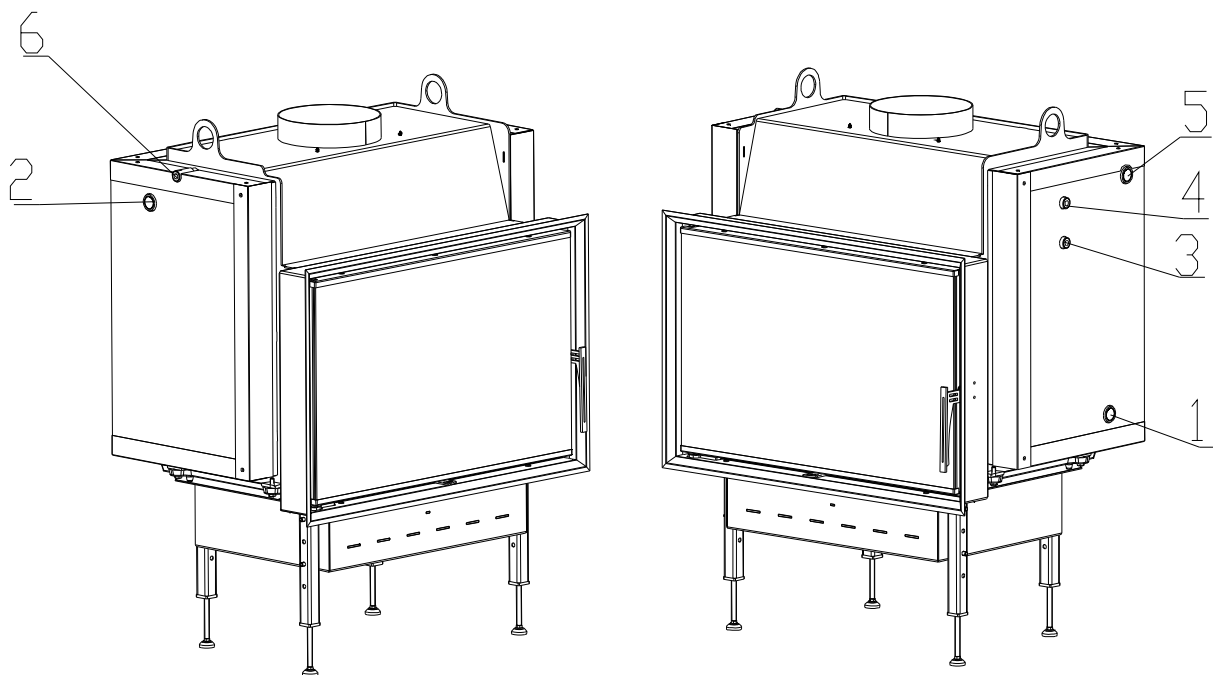
- 1 Smoke flue bellmouth**
- 2 Deflector**
- 3 Deflector**
- 4 Control of air suction regulation for combustion**
- 5 Glass**
- 6 Grate**
- 7 Exchanger**
- 8 Coolant loop**
- 9 Ash pan**
- 10 Frame**

Technical data:

		Closed firebox
Nominal heat output	kW	16
Efficiency	%	76
Efficiency for water	%	11
Volume flow of combustion products	g/s	13,8
Flue-gas temperature	°C	320
Min. feed pressure at nom. heat output	Pa	10
Fuel		wood (beech logs)
Fuel consumption per hour	kg/h	4,8
CO emission in burnt gas (in relation to 13% O ₂) %		0,49
Smoke flue diameter	mm	200
Weight	kg	127

Nominal heat output listed on a type label is with:

- favourable	Heating conditions sufficient for	70 – 90 m ³
- less favourable		40 – 70 m ³
- unfavourable		20 – 40 m ³
Min. diameter of convectional air input		927 cm ²
Min. diameter of convectional air output		1035 cm ²
One-hour input of convectional air		400 cm ²



- 1 – Cold water input into water exchanger (reverse), internal thread 3/4“
- 2 – Warm water output from water exchanger (rising pipe), internal thread 3/4“
- 3 – Cold water input for coolant loop, external thread 1/2“
- 4 – Warm water output from coolant loop, external thread 1/2“
- 5 – Thermic security sensor, internal thread 3/4“
- 6 – Input for bleed valve, external thread 1/2“



BeF Home, s.r.o.
 Kotvrdovice 277
 679 07 Kotvrdovice
 IČO: 25524682
 07

EN 13229:2001 and A1:2004

Wood-burning fireplace insert EN 13229 – W calculated for a room heating Type

Start 7 AQUA, Start V7 Aqua,

Distance from adjacent combustible materials: 7 + 10 cm of thermal insulation ¹⁾

CO emission in burnt gas

(in relation to 13% O₂):

0,49 %

Burnt gas temperature:

320 °C

Heating capacity:

16 kW of capacity for heating

Energy efficiency:

76 %

Kinds of fuel:

wood (beech logs)

Peruse and keep service instructions!