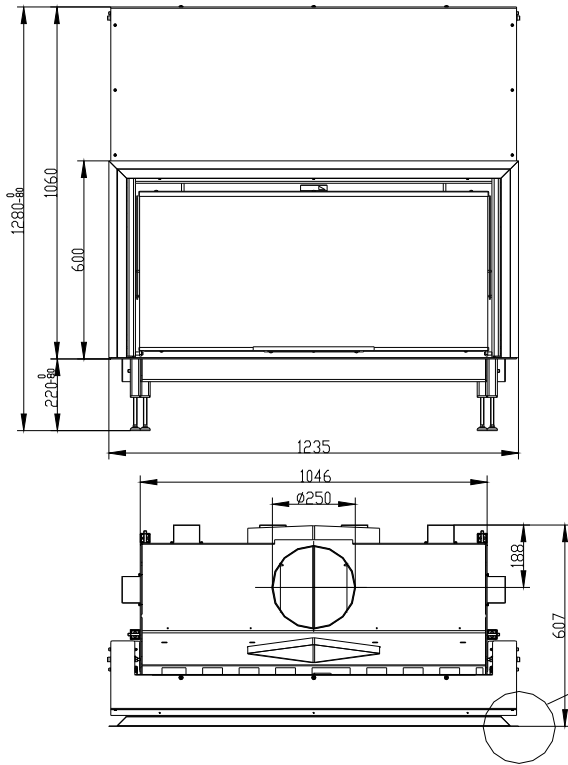
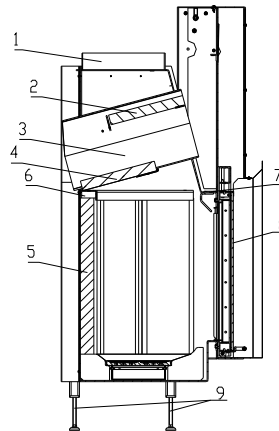


FIREPLACE INSERT BRIDGE in accordance with EN 13 229 – W

Schema:



Description:



- 1 Flue bellmouth
- 2 Deflector
- 3 Deflector
- 4 Deflector
- 5 Fire-bricks
- 6 Secondary chamber
- 7 Regulation of secondary air
- 8 Glass
- 9 Stands

Technical data:

		Closed firebox
Nominal heat output	kW	14,5
Efficiency	%	77
Volume flow of combustion products	g/s	19,6
Flue-gas temperature	°C	276,3
Min. feed pressure at nom. heat output	Pa	12
Fuel		wood (beech logs)
Fuel consumption per hour	kg/h	4,5
CO emission in burnt gas (in relation to 13% O ₂)	%	0,19
Smoke flue diameter	mm	250
Weight	kg	265

Nominal heat output listed on a type label is with:

- favourable	Heating conditions sufficient for	220 – 320 m ³
- less favourable		130 – 220 m ³
- unfavourable		90 – 130 m ³
Min. diameter of convectional air input		927 cm ²
Min. diameter of convectional air output		1035 cm ²
One-hour input of convectional air		60 – 90 m ³ /hod

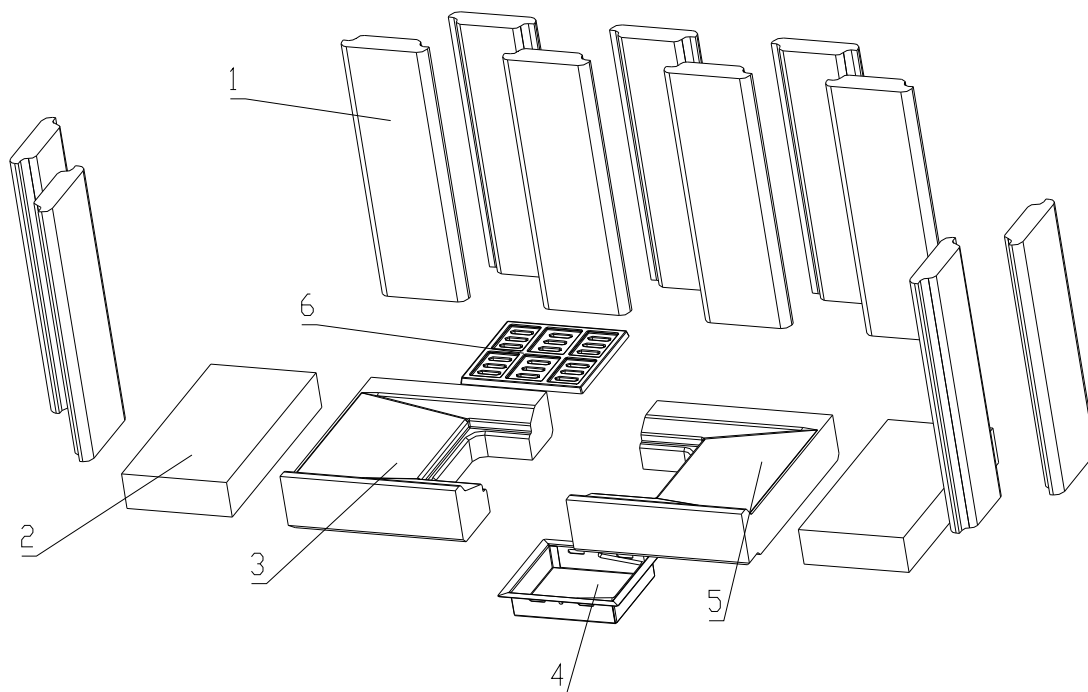
Preventive requiment:

		Thickness/mm
Brick veneer	Back wall	100
	Side wall	100
Brick veneer replacement, insulation acc. to AGI Q 132	Ceiling in the surround	60
Thermal insulation layer	Floor	20 + 20
	Side wall	80
	Back wall	140
	Convectional air ceiling	40/100
	Smoke flue outsider the convectional air coating	40

Min. distance of the fireplace insert from the inner side of the insulation:

Side wall	80 mm	From the insert surface to the inner side of the insulation
Back wall	80 mm	From the insert surface to the inner side of the insulation
Floor	380 mm	From the bottom edge of the space for wood to the top edge of floor insulation
Ceiling	265 mm	From the top edge of the inner part of ceiling insulation

Assembly of a fire-brick firebox:



- | | |
|--|--|
| <p>1 Side face</p> <p>2 Hearth</p> <p>3 Left base</p> | <p>4 Ash pan</p> <p>5 Right base</p> <p>6 Grate</p> |
|--|--|



BeF Home, Ltd.
Kotvrdovice 277
679 07 Kotvrdovice
IČO: 25524682
06

EN 13229:2001 and A1:2004
Wood-burning fireplace insert EN 13229 – W calculated for a room heating
Type **Bridge**
Modifications Bridge

Distance from adjacent combustible materials:	8 + 10 cm of thermal insulation ¹⁾
CO emission in burnt gas (in relation to 13% O₂):	0,19 %
Burnt gas temperature:	276,3 °C
Heating capacity:	14,5 kW of capacity for heating
Energy efficiency:	77 %
Kinds of fuel:	wood (beech logs)

Peruse and keep service instructions!

¹⁾ For details see Installation and Service Instructions